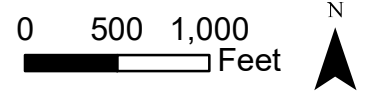
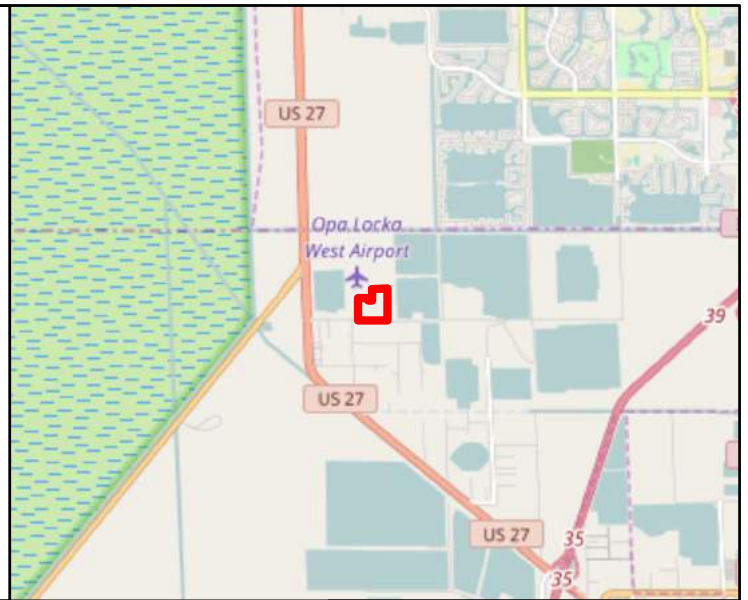
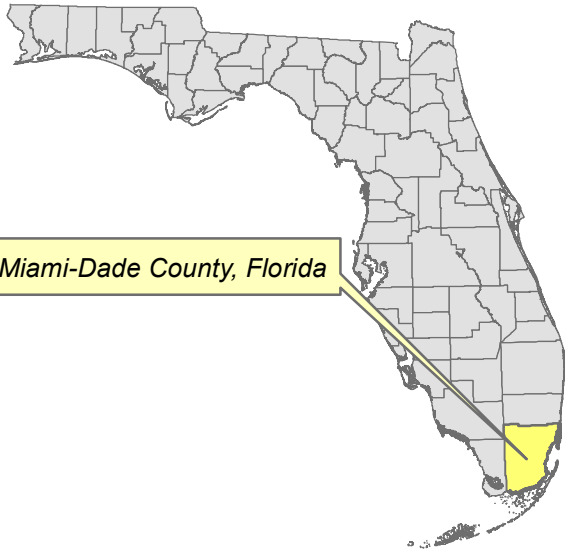


Miami-Dade County, Florida



Opa Locka Airport

US 27

Northwest 186th Street

Northwest 186th Street

Northwest 142nd Avenue

Northwest 182nd Street

Northwest 127th Avenue

Legend

 Project Boundary

Kimley»Horn

© 2017 Kimley-Horn and Associates, Inc.
1615 S Congress Ave #201,
Delray Beach, FL 33445
Phone (561)330-2345
www.kimley-horn.com

Project Location Map

**Univision Tower Relocation
Miami-Dade County, Florida**

1 inch = 1,000 feet

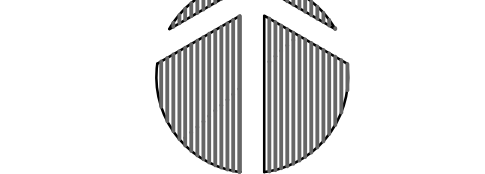
PROJECT NUMBER: 140352000

MARCH 2017

FIGURE 1

K:\BCD_ENV\140352000 - Univision Tower Relo\GIS\MXD\Univision_Location_Map.mxd

NORTH



GRAPHIC SCALE
100 0 50 100

(IN FEET)
1 inch = 100 ft.

GENERAL NOTES

SHEET KEYNOTES

- 1 - TOWER W/ 10' SQ. FENCE ENCLOSURE
- 2 - TOWER W/ 15' SQ. FENCE ENCLOSURE
- 3 - TOWER W/ 25' SQ. FENCE ENCLOSURE
- 4 - GUY ANCHOR W/ 8'X32' FENCE ENCLOSURE
- 5 - TUNING HUT 8' SQ @ TOWER 2 ONLY
- 6 - TRANSMITTER BUILDING (SEE ARCH DWG A-101)
- 7 - FUTURE FEMA ENCLOSURE (BY OTHERS)
- 8 - 20' WIDE SITE ACCESS DRIVE
- 9 - 12' WIDE TOWER ACCESS DRIVE
- 10 - 5' WIDE ANCHOR INSPECTION WALKWAY
- 11 - 8' CHAIN-LINK PERIMETER FENCE W/ BARBED WIRE TOPPING
- 12 - 8' CHAIN-LINK PERIMETER FENCE W/ RAZOR WIRE TOPPING
- 13 - 20' WIDE, 8' CHAIN-LINK MANUAL GATE W/ BARBED WIRE TOPPING
- 14 - 20' WIDE, 8' CHAIN-LINK MANUAL GATE W/ RAZOR WIRE TOPPING
- 15 - EX UTILITY POLE
- 16 - EX UTILITY POLE GUY ANCHOR
- 17 - EX OVERHEAD ELEC & TELECOMM UTILITIES
- 18 - PR UTILITY POLE (BY OTHERS)
- 19 - PR UTILITY POLE GUY ANCHOR (BY OTHERS)
- 20 - PR OVERHEAD ELEC & TELECOMM UTILITIES (BY OTHERS)
- 21 - ELECTRIC MANHOLE (SEE ELEC DWG E-000)
- 22 - PR UNDERGROUND ELEC & TELECOMM DUCTS (SEE ELEC DWG E-000)
- 23 - PR UNDERGROUND TRANSMISSION LINES (SEE ELEC DWG E-000)



**WAQI TOWER
RELOCATION**
OPA LOCKA WEST AIRPORT
OPA LOCKA AIRPORT ROAD
OPA LOCKA, FL 33054

**UNIVISION
MANAGEMENT
COMPANY**
605 THIRD AVENUE, 12TH FLOOR
NEW YORK, NY 10158

TAG	ISSUED	DATE
1	SD SUBMISSION	03.01.17

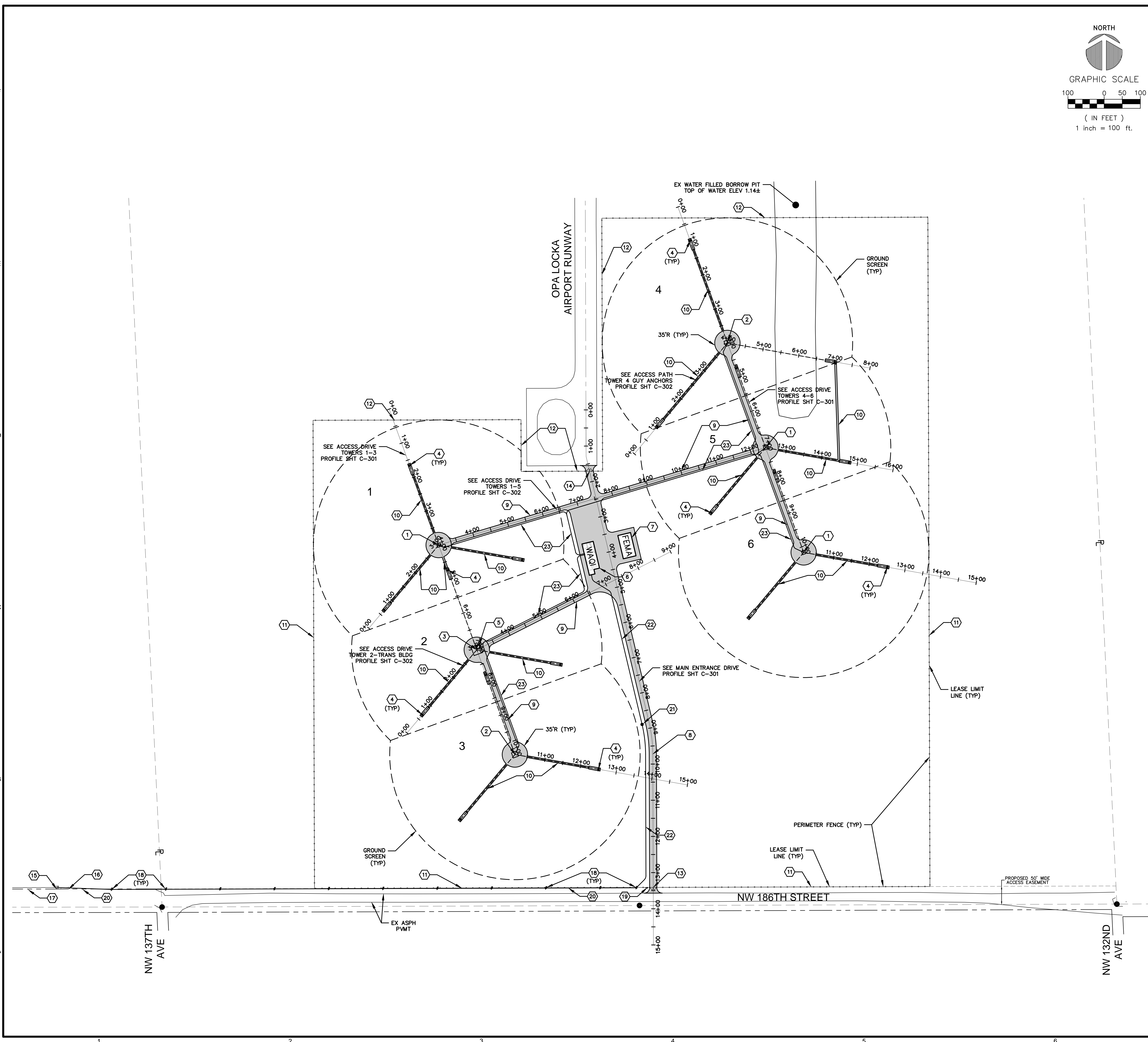
Unless otherwise stated in Contract, The Osborn Engineering Company retains copyright ownership. Instruments of Service may only be used for the purpose described in the Contract. The Osborn Engineering Company may grant specific usage rights under license, and / or may transfer copyright ownership assignment in writing. Reproduction, re-use or re-distribution of Instruments of Service is prohibited.

DRAWN BY KDC
CHECKED BY RRB
CLIENT PROJ. NO. N/A
OSBORN PROJ. NO. J20160532.000

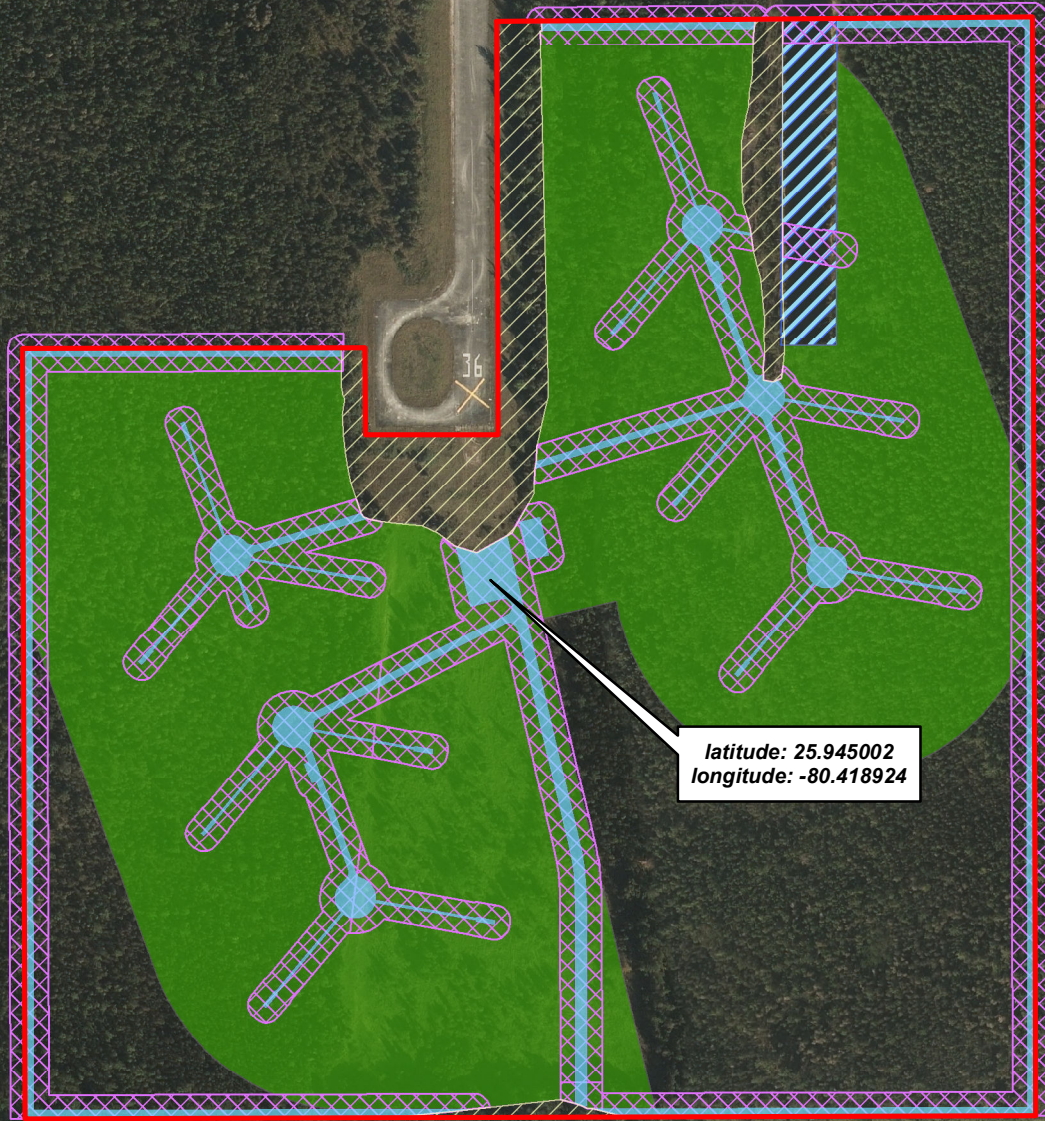
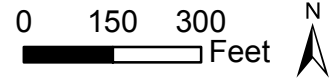
SITE PLAN

DRAWING NO.
C-201

NOT FOR CONSTRUCTION






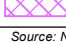


P:\Univision Communications\20160532.000 Relocation of AM Towers\Drawings\CH20160532-000-C-201_SITE PLAN.dwg
3/30/2017 10:01 AM Bodini, René



latitude: 25.945002
longitude: -80.418924

Legend

-  Project Area
-  Uplands (±3.37 acres)
-  Surface Waters (±1.09 acres)
-  Direct Impacts (±4.04 acres (Fill))
-  Temporary Impacts(±37.24 acres (Clearing))
-  Secondary Impacts (±13.05 acres)

Source: NWI, FDOT APLUS

K:\BCD_ENV\140352000 - Univision Tower Relocation\GIS\MXD\Univision Tower\Impacts.mxd



© 2017 Kimley-Horn and Associates, Inc.
1615 S Congress Ave #201, Delray Beach, FL 33445
Phone (561) 330-2345 Fax (561) 863-8175
www.kimley-horn.com

Wetland Impacts Map

**Univision Tower Relocation
Miami-Dade County, Florida**

1 inch = 300 feet

PROJECT NUMBER: 140352000

MARCH 2017

FIGURE 8



WAQI TOWER RELOCATION
 OPA LOCKA WEST AIRPORT
 OPA LOCKA AIRPORT ROAD
 OPA LOCKA, FL 33054

UNIVISION MANAGEMENT COMPANY
 605 THIRD AVENUE, 12TH FLOOR
 NEW YORK, NY 10158

TAG	ISSUED	DATE
1	SD SUBMISSION	03.01.17

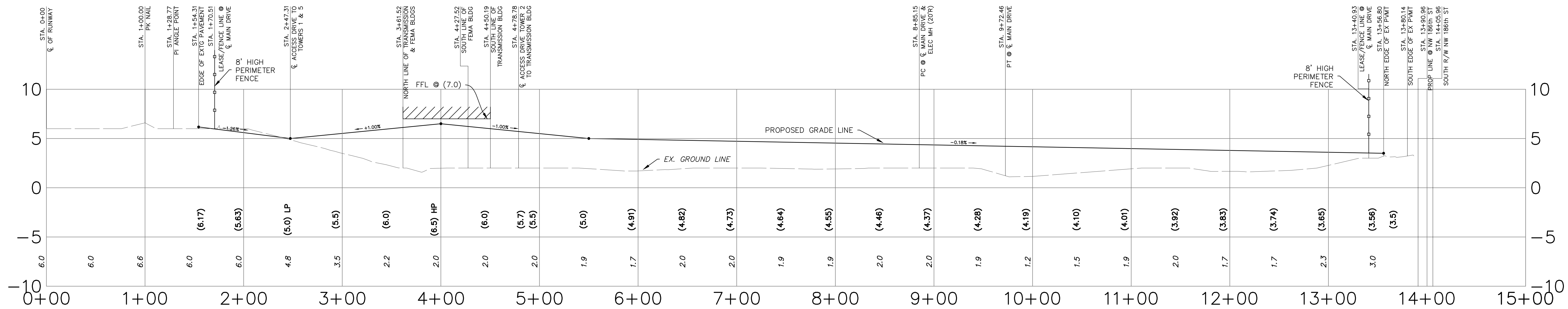
Unless otherwise stated in Contract, The Osborn Engineering Company retains copyright ownership. Instruments of Service may only be used for the purpose described in the Contract. The Osborn Engineering Company may grant specific usage rights under license, and / or may transfer copyright ownership assignment in writing. Reproduction, re-use or re-distribution of Instruments of Service is prohibited.

DRAWN BY: KDC
 CHECKED BY: RRB
 CLIENT PROJ. NO.: N/A
 OSBORN PROJ. NO.: J20160532.000

PROFILES

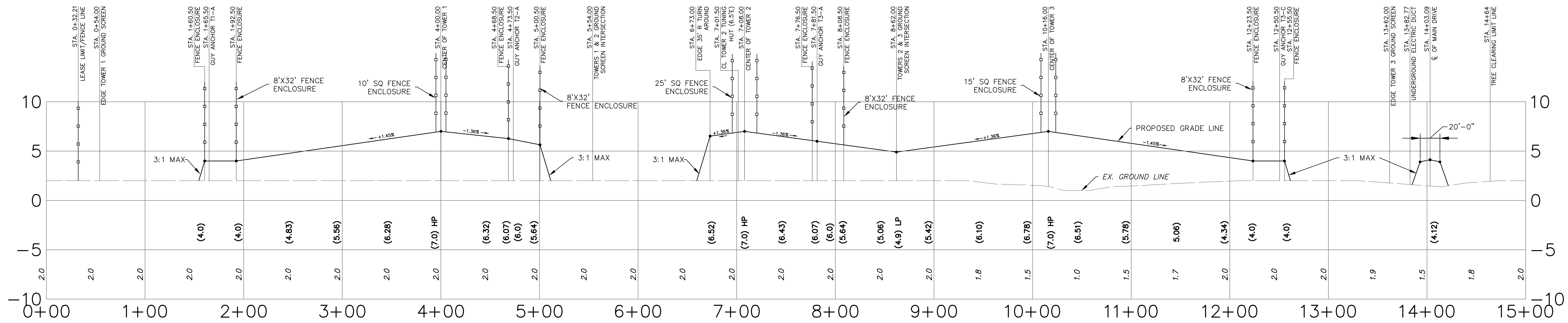
DRAWING NO.:
C-301

NOT FOR CONSTRUCTION



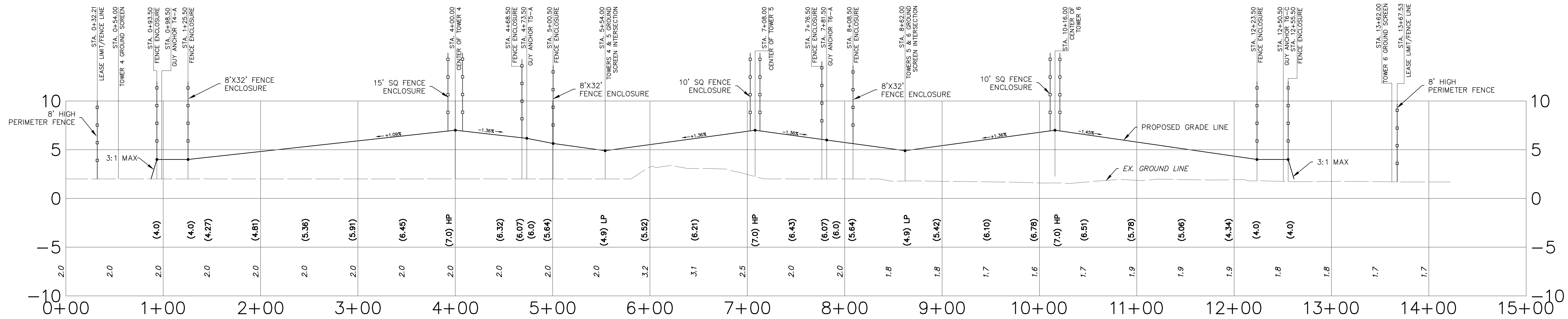
MAIN ENTRANCE DRIVE PROFILE

1" = 50' HORZ, 1" = 5' VERT



ACCESS DRIVE TOWERS 1-3 PROFILE

1" = 50' HORZ, 1" = 5' VERT



ACCESS DRIVE TOWERS 4-6 PROFILE

1" = 50' HORZ, 1" = 5' VERT



WAQI TOWER RELOCATION
 OPA LOCKA WEST AIRPORT
 OPA LOCKA AIRPORT ROAD
 OPA LOCKA, FL 33054

**UNIVISION
 MANAGEMENT
 COMPANY**
 605 THIRD AVENUE, 12TH FLOOR
 NEW YORK, NY 10158

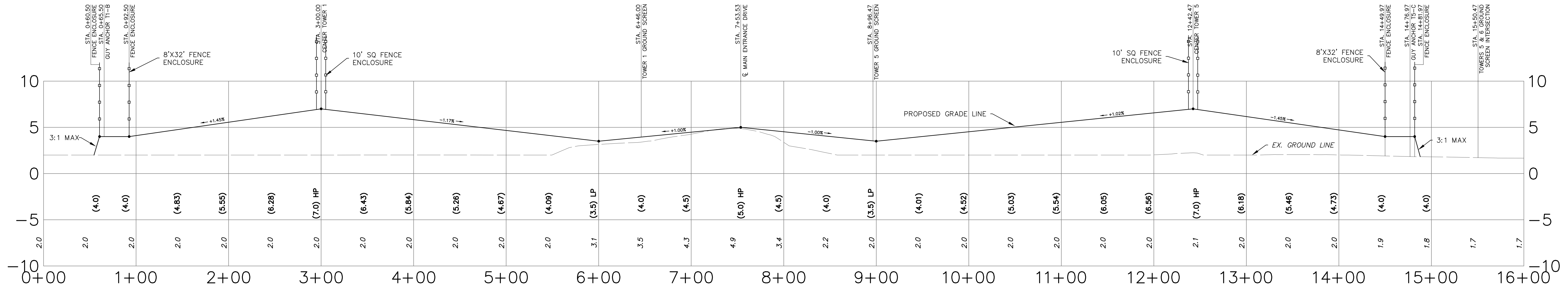
TAG	ISSUED	DATE
1	SD SUBMISSION	03.01.17

Unless otherwise stated in Contract, The Osborn Engineering Company retains copyright ownership. Instruments of Service may only be used for the purpose described in the Contract. The Osborn Engineering Company may grant specific usage rights under license, and / or may transfer copyright ownership assignment in writing. Reproduction, re-use or re-distribution of Instruments of Service is prohibited.

DRAWN BY: KDC
 CHECKED BY: RRB
 CLIENT PROJ. NO.: N/A
 OSBORN PROJ. NO.: J20160532.000

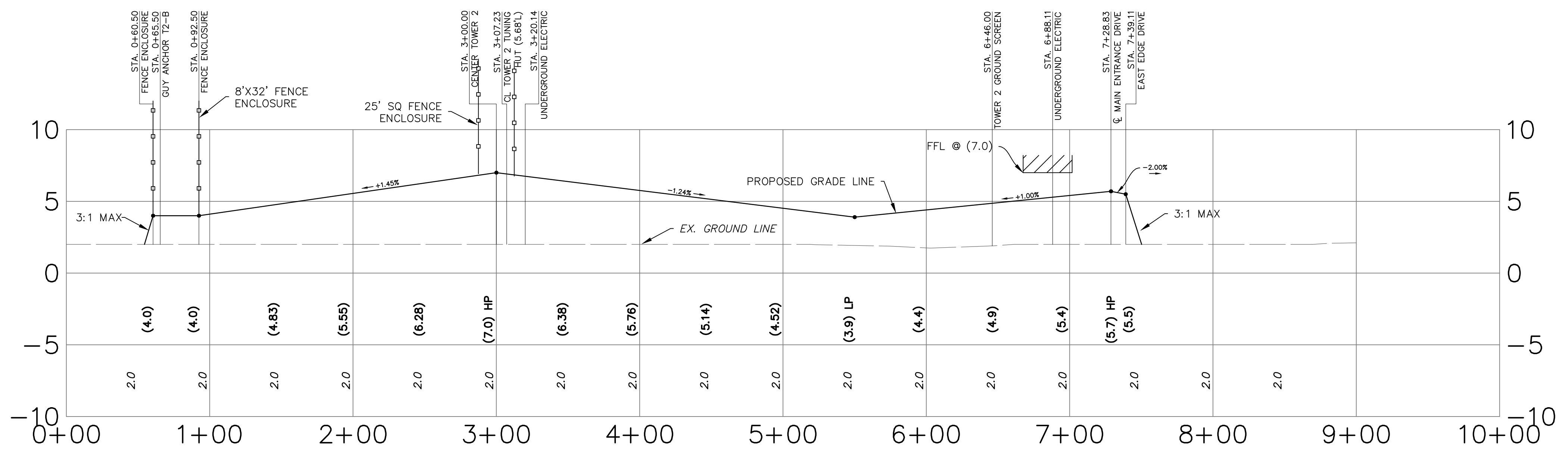
PROFILES

DRAWING NO.
C-302



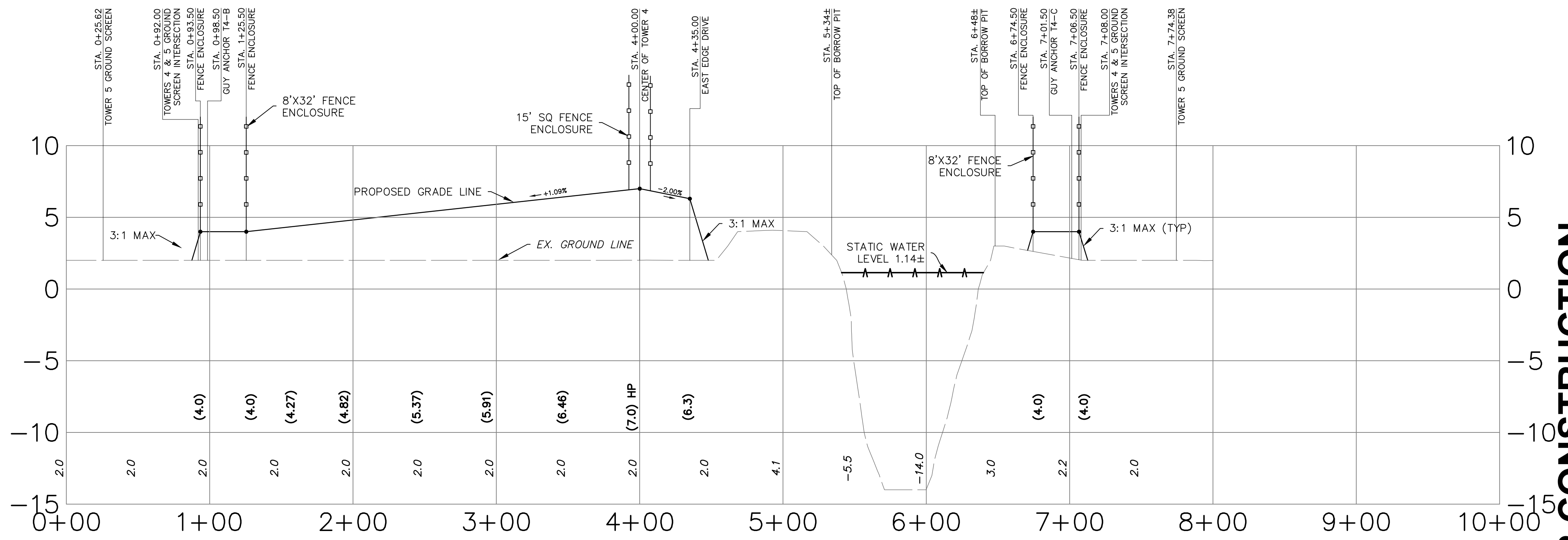
ACCESS DRIVE TOWERS 1-5 PROFILE

1" = 50' HORZ, 1" = 5' VERT



**ACCESS DRIVE TOWER 2
 TO TRANSMISSION BUILDING PROFILE**

1" = 50' HORZ, 1" = 5' VERT



ACCESS PATHS TOWER 4 GUY ANCHORS PROFILE

1" = 50' HORZ, 1" = 5' VERT

NOT FOR CONSTRUCTION